



# Trends related to the phytosanitary situation in Europe and implications for national control programmes

**Belgian Federal Agency for the Safety of the Food Chain  
Symposium: Trend watching and food safety control  
11 March 2016**

**Lars Christoffersen  
Food and Veterinary Office**

# Reporting requirements

*Organisms, harmful to plants (HO):*

- *Interceptions in trade*
- *Outbreaks on EU territory*

# Reporting tools

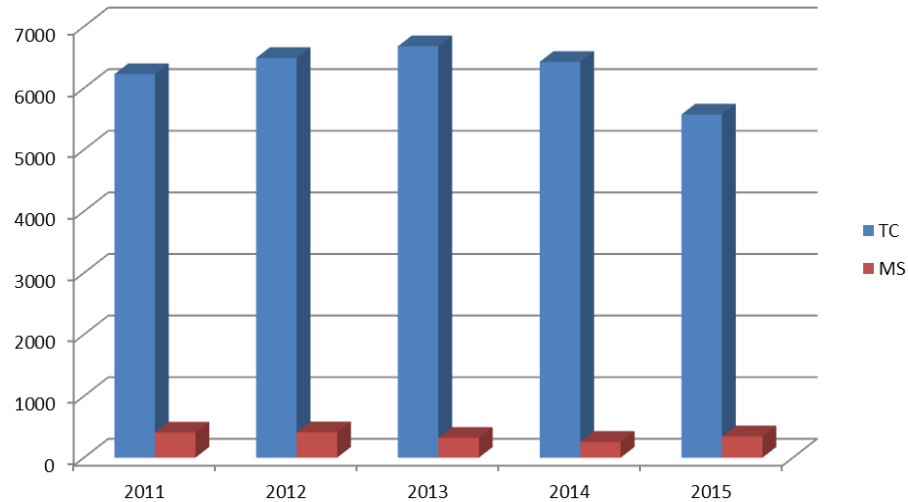
- *Interceptions in trade:*
  - **EUROPHYT(In near future: "EUROPHYT-Interceptions")**
  - **Operational for over 10 years**
  - **Functions:**
    - Rapid alert (other MS, Commission)
    - Statistics (overview, monitoring, policy)
    - Notification (exporting country)

# Reporting tools

- *Outbreaks on EU territory:*
  - **EUROPHYT-Outbreaks**
  - **Under development (operational 2016)**
  - **Functions:**
    - Rapid alert (other Member States, Commission)
    - Statistics (overview, monitoring, policy, sharing of knowledge)
    - Notification (EPPO -> IPPC)

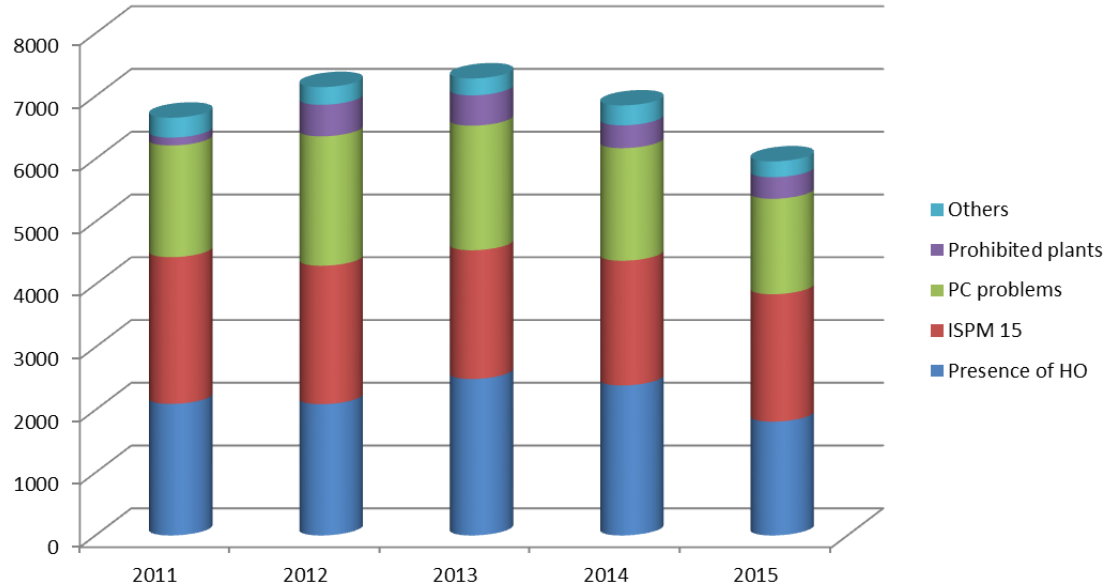
# Trends in interceptions

**Total annual  
interceptions**



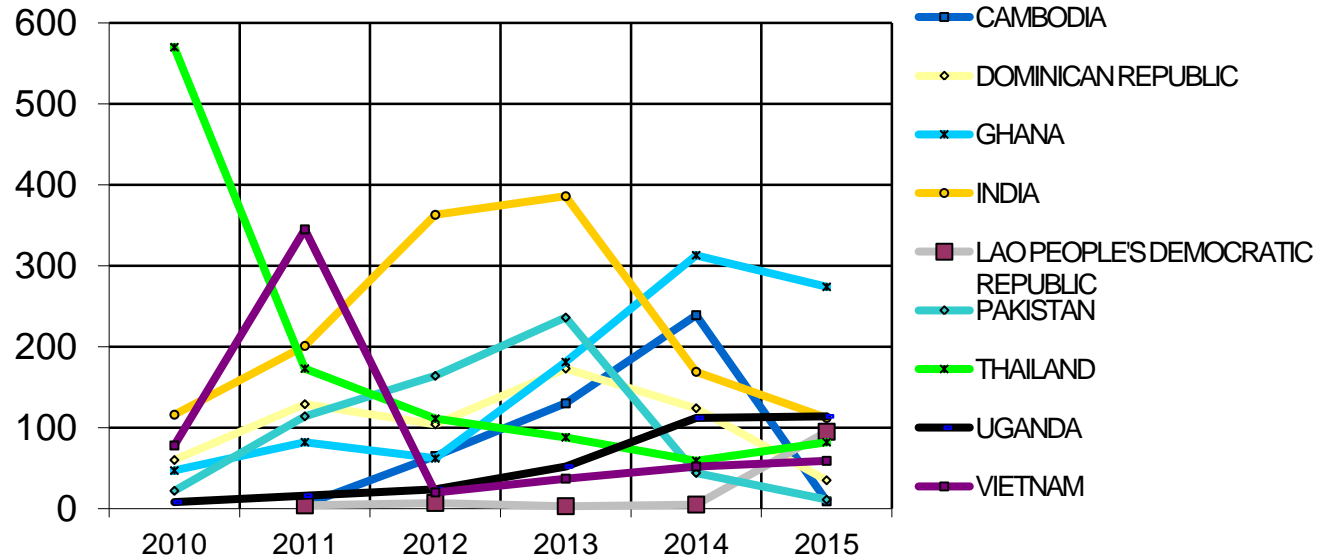
# Trends in interceptions

## Reasons for interception



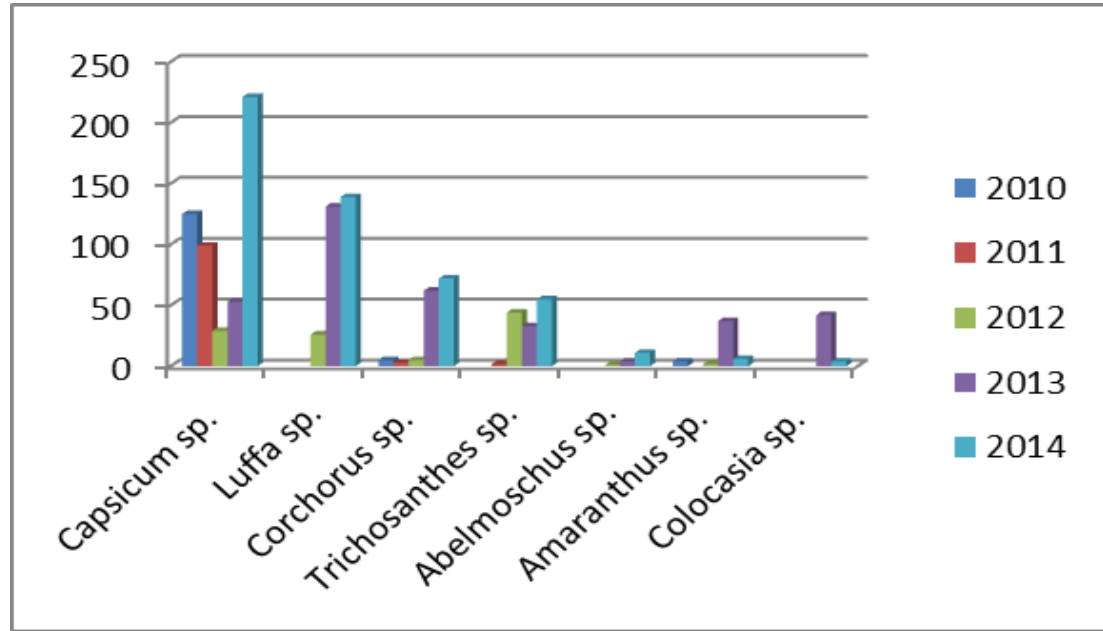
# Trends in interceptions

**Annual HO  
interceptions  
from selected  
countries**



# Trends in interceptions

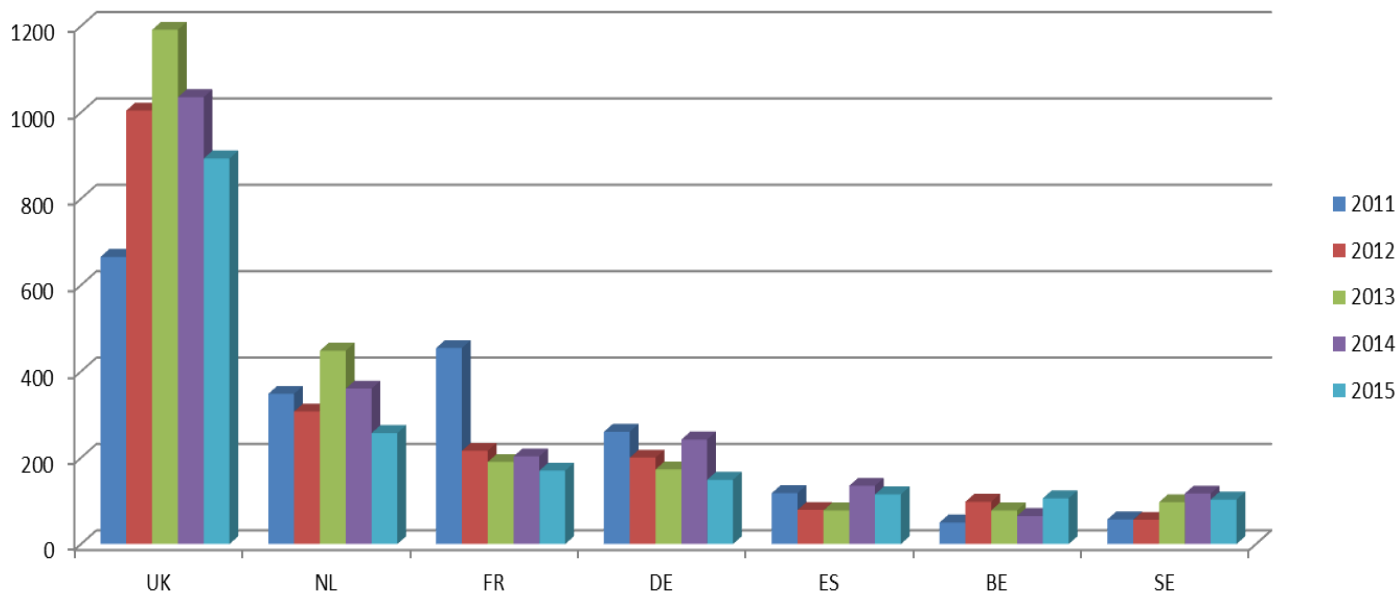
**New  
commodities  
with HOs**





# Trends in interceptions

**MS with most  
HO  
interceptions**

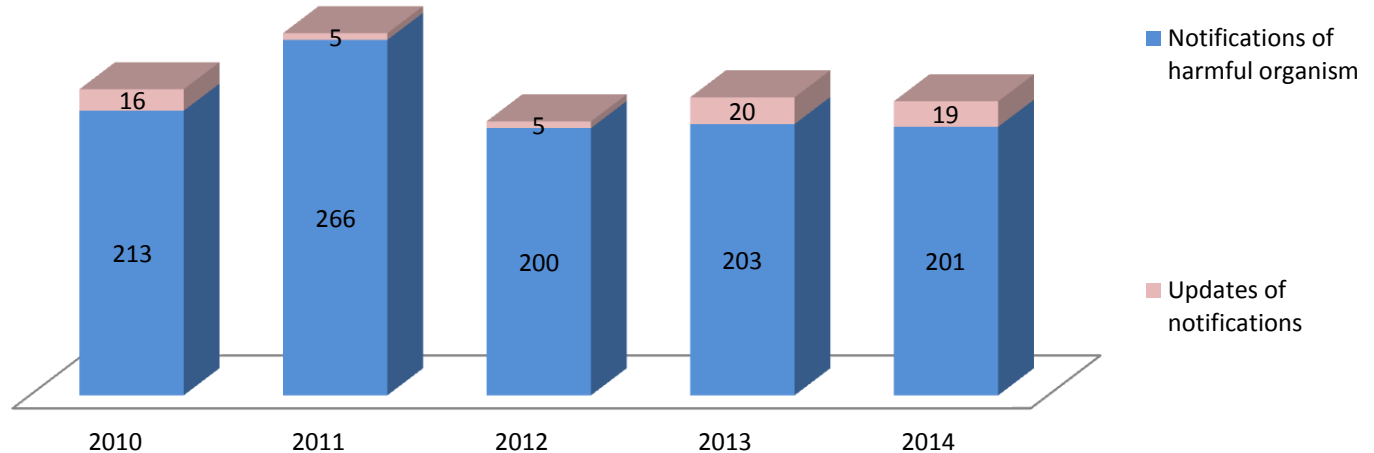




European  
Commission

# Trends in outbreaks

## Notifications of HOs on EU territory

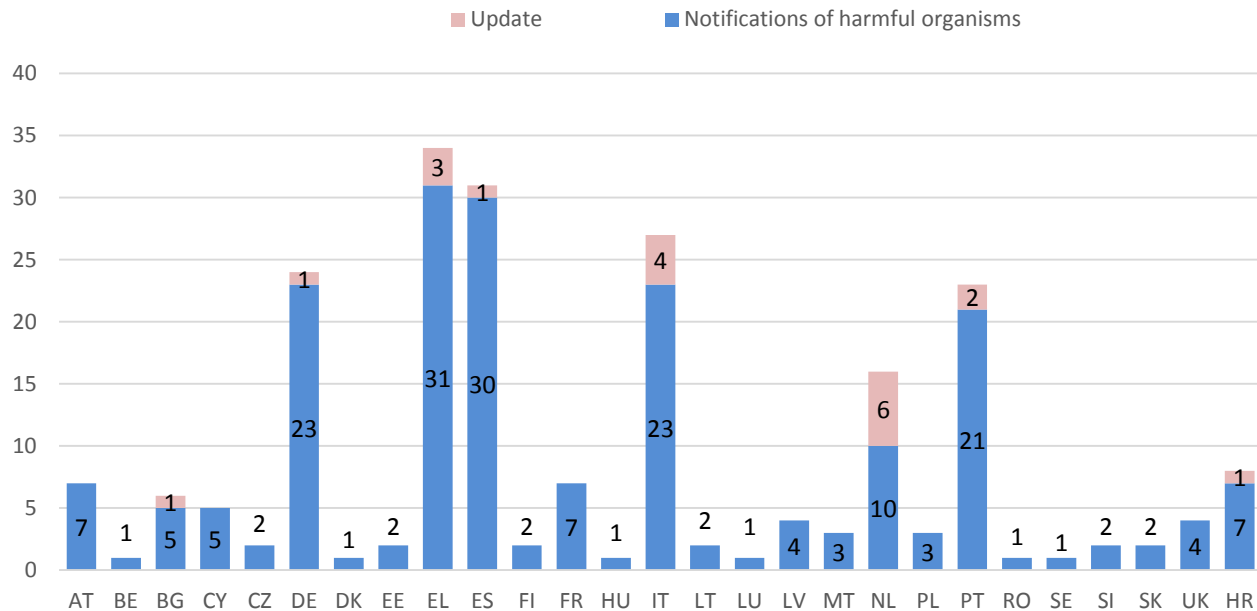




European  
Commission

# Trends in outbreaks

## Notifications of HOs on EU territory

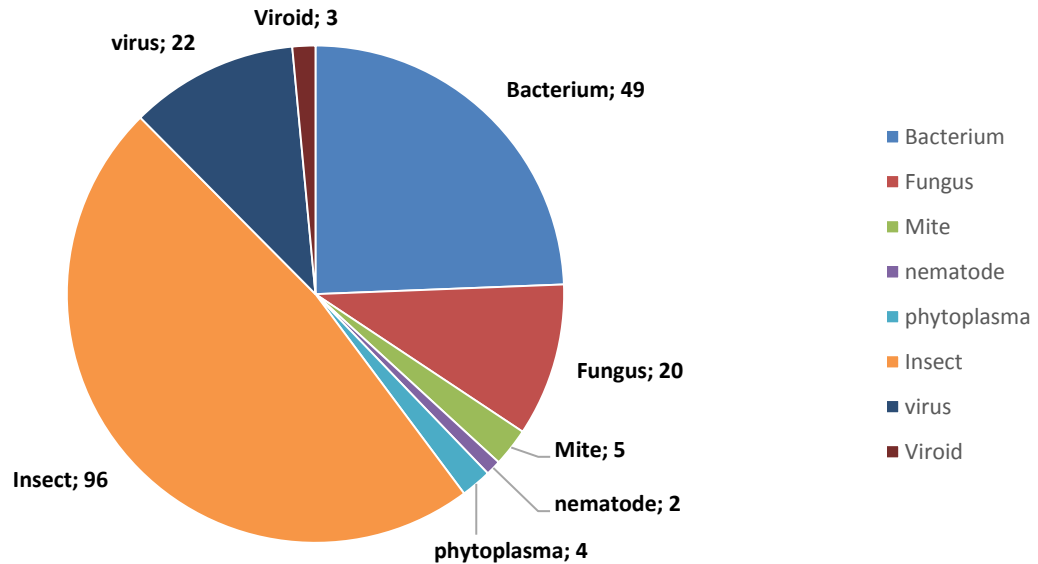




European  
Commission

# Trends in outbreaks

## Taxonomic HO groups reported



# Trends in outbreaks

- *More diseases than insects, examples:*
  - ***Xylella fastidiosa* (on olives etc.)**
  - **1000 canker disease (on walnut)**
- *But also insects:*
  - ***Trioza erytreae* (citrus psyllid)**
  - ***Popilia japonica* (Japanese beetle)**

## Limitations of reporting systems

- *Require high degree of maintenance and supervision for data quality and reliability*
- *Data reflect what Member States do (look for) rather than absolute risk*
- *Extremely useful, nevertheless*

# Implications for national control programmes

- *Member States should use interception data to:*
  - **Identify shifts in risk origins**
  - **Identify new risk commodities**
  - **Identify weaknesses by compare statistics within country (BIPs) and with those of other MS**

## PHYTOSANITARY ALERT LIST FOR COMMODITIES ENTERING TERRITORY COVERED BY THE COMMON EU PLANT HEALTH REGIME - based on EUROPHYT data

Reporting period: **01 October 2014** to **30 September 2015**

No	Country of export	Interceptions with HO	Comodities, intercepted most with HO	HO inter-ceptions	Main HOs intercepted	Number of interceptions
1	GHANA	368	<i>Capsicum</i> spp.	154	<i>Thaumatotibia leucotreta</i>	135
					Tortricidae	7
					Fruit flies	6
					White flies	5
			<i>Solanum</i> spp. other than potato and tomato	73	Thrips	66
					White flies	6
			<i>Luffa</i> spp.	54	Thrips	47
			<i>Lagenaria</i> spp.	31	Fruit flies	31
			<i>Momordica</i> spp.	20	Fruit flies	10
					Thrips	10
			<i>Corchorus</i> spp.	12	White flies	12
			<i>Ipomoea</i> spp.	11	White flies	10
			<i>Manihot</i> spp.	5	White flies	5
2	INDIA	169	Wood packaging material	110	Wood and bark insects other than longhorn beetles	113
			<i>Abelmoscus</i> spp.	17	Thrips	17
			<i>Mangifera</i> spp.	5	Fruit flies	5
3	UGANDA	155	<i>Capsicum</i> spp.	103	<i>Thaumatotibia leucotreta</i>	91
					Fruit flies	11



# Implications for national control programmes

- *Is our import control system adequate?*
  - **Based on visual inspections**
  - **Plants for planting**
  - **Personal luggage concessions**
  - **New plant health and official control regulations being finalised**

# Implications for national control programmes

- *For eradicating outbreaks*
  - **Rapid detection**
  - **Rapid and determined measures**
  - **Knowledge, EU support**
  - **New reporting system**
  - **New plant health regulation being finalised**

## Links

- *Annual EUROPHYT – Interceptions report:*  
[http://ec.europa.eu/food/plant/plant\\_health\\_biosafety/europhyt/annual\\_reports/index\\_en.htm](http://ec.europa.eu/food/plant/plant_health_biosafety/europhyt/annual_reports/index_en.htm)
- *Annual outbreaks report:*  
[http://ec.europa.eu/food/plant/plant\\_health\\_biosafety/harmful\\_organism\\_outbreaks/index\\_en.htm](http://ec.europa.eu/food/plant/plant_health_biosafety/harmful_organism_outbreaks/index_en.htm)
- *Non-EU trade alert list:*  
[http://ec.europa.eu/food/plant/plant\\_health\\_biosafety/non\\_eu\\_trade/alert\\_list/index\\_en.htm](http://ec.europa.eu/food/plant/plant_health_biosafety/non_eu_trade/alert_list/index_en.htm)



European  
Commission

**Thank you**